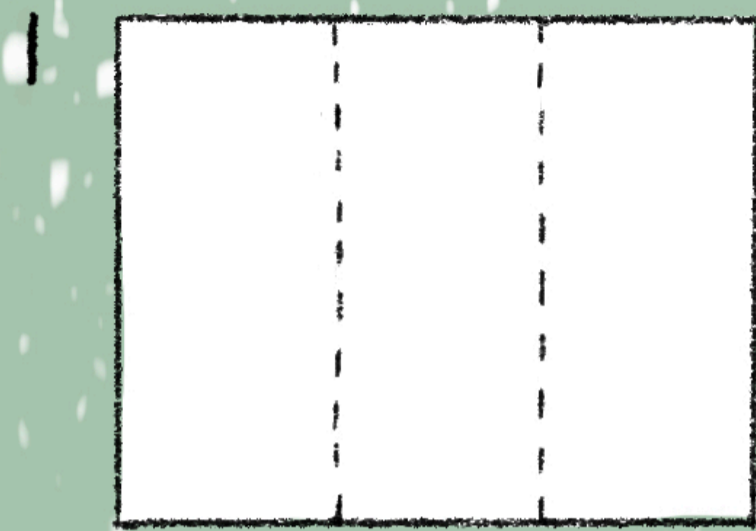


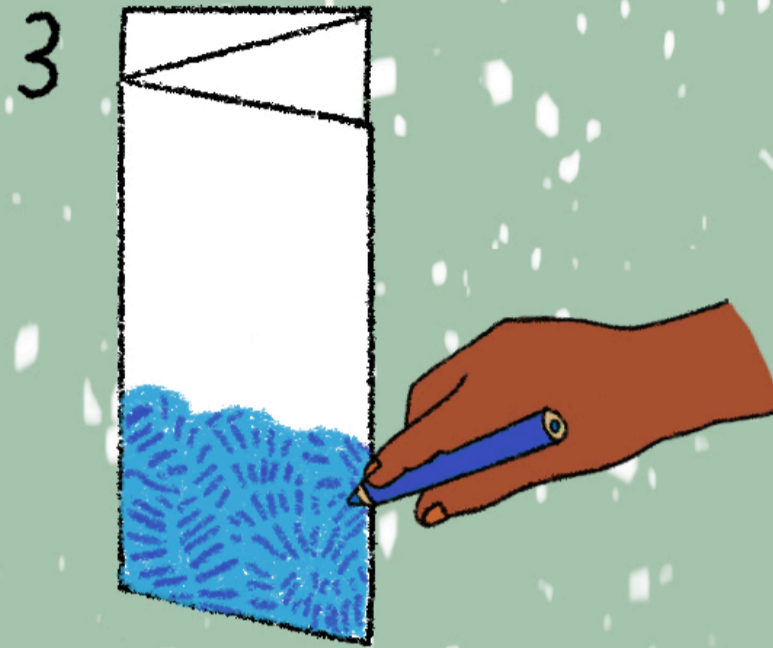
HOW TO MAKE A CONCERTINA CARD



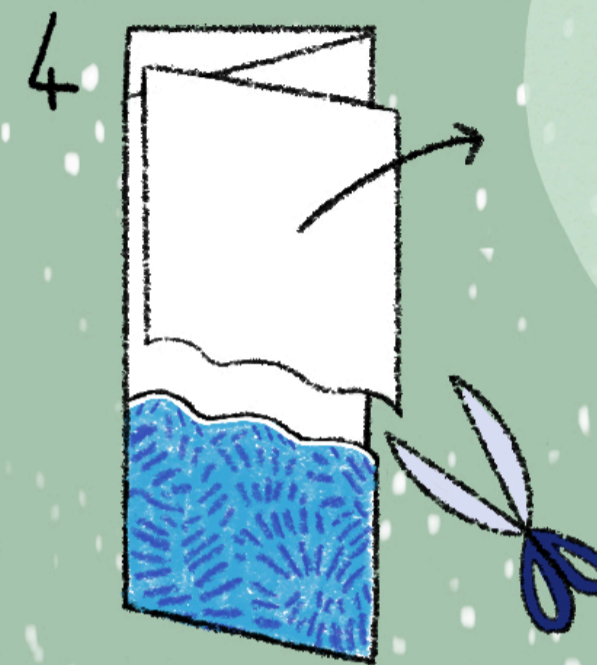
1 Take an A4 piece of card and fold it into 3 equal panels.



2 Fold the panels so they are in a concertina style 'zig zag'.



3 In the bottom third of the first panel draw your 'Sea'. Explore using different mark making to do this.



4 Cut away the top of the first panel around your 'Sea' drawing.

If you head upstairs to North Gallery during your visit to the Box today you will find the 'Land Sea Sky' exhibition. One of the artists on display is JMW Turner who was known for his dramatic landscape paintings.

Trees by a Lake or River, with a Cloudy Sky.



1820 JMW Turner

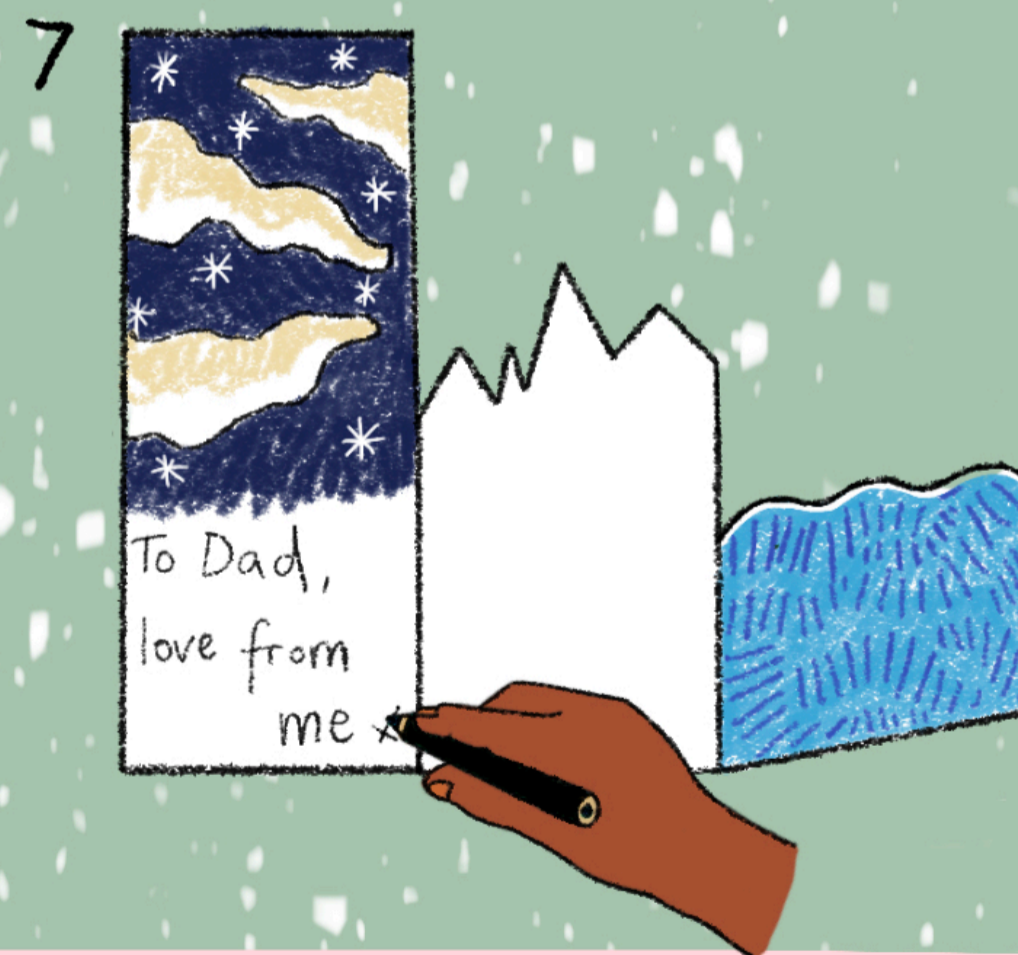
You are invited to make a card to give to a loved one this winter, inspired by Turner's use of colour and mark making.



5 Open out your 'Sea' drawing and on the second panel draw your 'Land' image, filling the bottom two thirds of the panel.



6 Cut away the top of the second panel around your 'Land' drawing.



7 Open out your 'Land' drawing and on the final panel draw your 'Sky' image, filling the top two thirds of the panel. You can use the bottom of the panel, to write your message.



This activity is inspired by the works of JMW Turner which can be seen in the exhibition Land Sea Sky: 19 Oct - 12 Jan 2025

8 Fold down your card into a concertina landscape to finish.