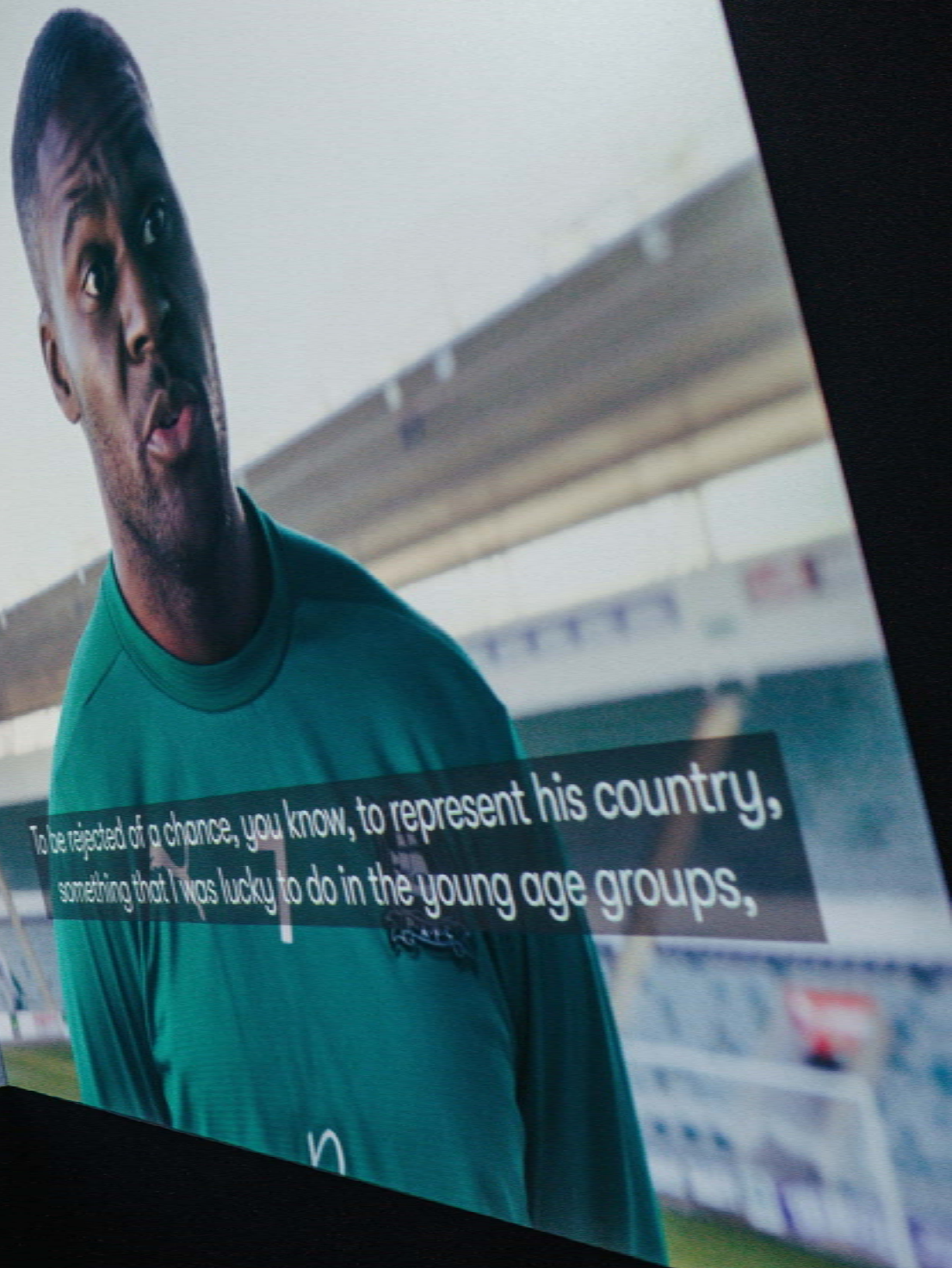


The Box

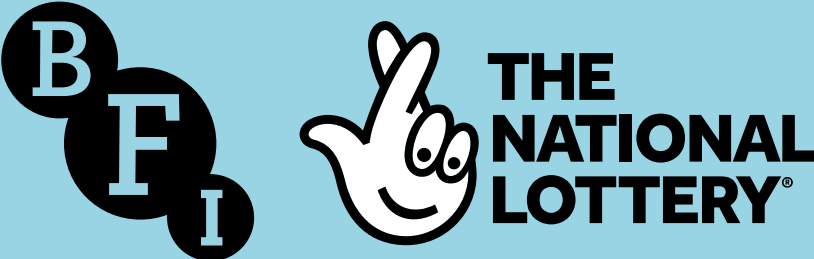
Call for Researchers



To be rejected of a chance, you know, to represent his country, something that I was lucky to do in the young age groups,



This opportunity has been made possible with the support of the BFI, awarding funds from the National Lottery (The BFI Screen Heritage Fund Resilience Awards)



The Box



Supported using public funding by
ARTS COUNCIL ENGLAND

BACKGROUND

The Box is an ambitious new cultural organisation in Plymouth. It is part museum, gallery and archive, a social space for art, people and objects. The Box has recently undergone a significant transformation bringing collections from across the city into one new purpose-built venue, which is free to access.

We are opening our archives to researchers to discover more about the films in our collection, formerly held by the South West Film and Television Archive. They comprise of more than 250,000 works maintained in their original, digital and born digital formats. They form one of the largest regional film archives in the UK, which is recognised nationally as a significant screen heritage collection. Preserved in specialist cold and freezer stores within The Box, they depict many changes in the city and region from the late 1890s to the present day.

This call for research forms part of our journey of decolonisation at The Box. The process will help us to discover and share the stories in our film collection of diverse narratives that reflect the many communities in the South West and our connections across the globe. We are looking to commission research that will enhance our understanding of the collections we hold, reveal new narratives that can be shared in future projects and/or identify missing content from our film archive.





RESEARCHER

With a rich mix of local television programmes, current affairs, news and documentaries along with substantial home movies collections, the archive provides hundreds of as yet unseen stories, many of which have not been catalogued fully and some that are as yet unknown. To enable us to unlock these stories we are particularly keen to welcome researchers from the global majority or with protected characteristics that are underrepresented in museums, galleries and archives.

Led by researchers of diverse lived experience, the research will build on a recently produced report on the diversity of the film archive. Researchers will identify gaps in the collection, through an Equality, Diversity and Inclusion (EDI) and decolonial lens. You may already be working in the field of research but we also welcome applications from those without a formal research background (such as artists, film enthusiasts, community leaders or content creators). We are looking for applicants with ideas of how they might platform or further share the stories they discover, and welcome applications from people working on a project that would be enhanced by this research.

We are flexible about how the research may be conducted – this could be over an intensive period or spread across the next 12 months. Due to the nature of the film archive and the need to view the material, there will be a requirement for some of the research to be conducted on site at The Box, at mutually convenient times.

TIMESCALE

Deadline for applications: 4 Sep 2023
Interviews by end of Oct 2023

FEES

There is a total fee of £3000
(equivalent to 20 days) which will be paid
as a grant.

A payment schedule will be agreed with
the successful applicant(s).

SELECTION PROCESS

To apply please send a statement of
interest, which should include your
research area interest, how you would
approach the research, how the research
would enhance your practice and support
the aims of The Box, as well stating how
you envisage sharing / using the material
uncovered from your research. Shortlisted
applicants will be invited to an informal
discussion before the final two awards
are announced.

Please send your application to
theboxenquiries@plymouth.gov.uk





CONTACT

For further information or an informal discussion, please email tony.davey@plymouth.gov.uk or jilly.payne@plymouth.gov.uk

The Box